

FAQ:

Who do I contact if I think a sign is missing?

Call the Washington District Library at (309)444-2241 or Facebook Message us @thewdl to report any issues.

Do I have to go when the locations are open?

No, all signs are outside. Just be mindful of the location's property and others using the location.

Who can participate?

The challenge is for all ages. You do not have to be signed up for Summer Reading to participate. However, you need to be signed up for our Beanstack Challenge if you want to earn Summer Reading Tickets.

Do I have to find all the items?

No. Each piece of gardening equipment found earns you a Summer Reading Ticket, whether you finish the Challenge or not. However, you must find all 10 items to earn your completion button.



Scan to sign
up and record
ticket codes!
washingtondl.org

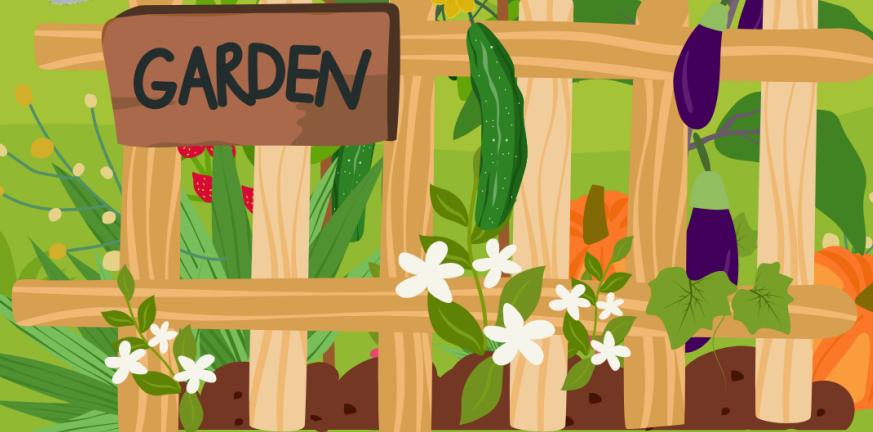


WASHINGTON DISTRICT LIBRARY HERBERT THE GNOME'S GARDENING SCAVENGER HUNT

JUNE 1 - JULY 12



*Can you find
Herbert's missing
gardening equipment?*



HOW IT WORKS:

Use the clues provided to find all 10 pieces of gardening equipment around town.

A picture of each item is on a yard sign at each site. Record each item in the booklet along with the 4-digit code to enter into Beanstack to earn a summer reading ticket.

Once you have found all 10 pieces of gardening equipment, bring your booklet to either library to receive your Completion Button!

Item: _____

Code: _____

*Clue:Old Lawnmower
Hospital*

Item: _____

Code: _____

*Clue:Historic
Landmark Bridge*

Item: _____

Code: _____

*Clue:Fisherman's
Delight*

Item: _____

Code: _____

*Clue:Kunekune Pig's
Palace*

Item: _____

Code: _____

*Clue:Friendly Active
Seniors*

Item: _____

Code: _____

*Clue:Home of the
Plants*

Item: _____

Code: _____

*Clue:Downtown
Market*

Item: _____

Code: _____

Clue:Pollinator Garden

Item: _____

Code: _____

*Clue: WHIP's Produce
Supply*

Item: _____

Code: _____

Clue:Three Reds